



# ON THE DRY SIDE

The next meeting is Sunday  
October 11 at 2:00.

Our Speaker will be **KEITH KITOI TAYLOR**

San Francisco Bay Area born and raised, Keith “Kitoi” Taylor, has been a renowned cactus and succulent collector for over thirty years, as well as an established potter. Keith has an extensive collection of many specimens of rare and collectible plants. He was interested in showing his plants at various Cactus and Succulent club shows, but was never satisfied with the containers available in the retail market. His solution? About 10 years ago, he began making his own. Soon after, his pots were admired by fellow enthusiasts and collectors, and he began making them for friends, family and grew his craft to what it is today.

His unique styles and dynamic textures play off the natural tones and textures of his specimens. The idea behind many of his pieces, is to give the plant a one-of-a-kind ‘habitat’ style vessel to showcase not only the beauty of the plant, but the natural elements of the pottery.

In 2019, Kitoi was invited to be the keynote speaker at the Cactus and Succulent Convention Philippines for their “Art Imitates Life” conference in Manila.

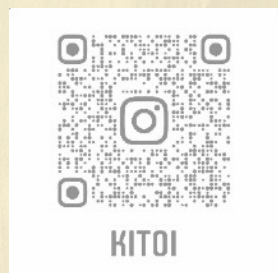
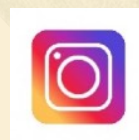
He also travels throughout Northern California, Southern California, and Arizona. Throughout the years Kitoi has given many talks and demonstrations on his plants, staging, and pottery. As of Covid-19, Zoom has become his platform of choice, still doing presentations.

He is currently a member of the Cactus and Succulent Society of America, CSS of Sacramento, CSS of San Francisco, CSS of San Gabriel, CSS of Los Angeles, CSS of San Diego and Central Arizona Cactus and Succulent Society.

In his spare time, Keith is a Pedorthist (fabricator of foot appliances), enjoys cooking exotic dishes and is a fitness enthusiast. He also loves the outdoors, which is where much of his creativity and inspiration is derived.



Follow Kitoi on the socials.



SPEAKER OF THE MONTH - K.K. Taylor



### *Ibervillea lindheimeri*

Member of the family  
Cucurbitaceae.

**Derivation of specific name:**

*Ibervillea lindheimeri* was named in honor of Ferdinand Jacob Lindheimer, a prominent botanist in the nineteenth century.

**Common Names include:**

**English:** Balsam gourd, Globeberry, Globe Berry, Globe berries, Lindheimer's globeberry, Wild balsam, Wild balsam-apple, Deer apple

**Spanish (Español):** Yerba de vibrona

**Origin and Habitat:** Coastal Texas (Cameron, Hidalgo, Willacy, and Starr counties ) west to eastern New Mexico, north to Oklahoma; Mexico.

**Habitat and ecology:** Fairly frequent on sandy soils, mostly in coastal oak woods, but also on a variety of soil types in rocky hills and fences, at edges of thickets and in open woods. The seeds are eaten by scaled quail, and the leaves are occasionally eaten by white-tailed deer.

**Description:** *Ibervillea lindheimeri* is a slender perennial, trailing or climbing vine with tendrils, growing from a large caudex, it produces small hardly noticeable, yellow flowers in summer and showy, bright orange-to-red melons one inch in diameter in autumn. The fruits are more noticeable than the flowers and visible at eye level, or higher, in the trees. The dark green, lobed leaves are scattered along the branching stems, giving the vine a delicate appearance. You don't have to worry about it getting out of hand, because it dies to the ground in the winter. Ibervilleas are often grown in containers with the caudex exposed.



Show plant

## PLANT OF THE MONTH - Cont'd



**Caudex:** The caudex (swollen tuberous roots) is thick nearly globose or somewhat flattened up to sixteen inches in diameter in older plants. Injured caudexs release the odour of horseradish.

**Stems:** Wiry, slightly angled, glabrous, dark green herbaceous, annual, that die to the ground in the winter, sprawling on the ground or climbing onto various supports by means of unbranched tendrils.

**Leaves:** Alternate, blades two to three inch wide, thick, glabrous above and pustulate-glandular below; very variable in shape,, mostly 3- to 5-lobed, often wider than long, angled to irregularly and often deeply lobed.

**Flowers:** Axillary, yellow or greenish-yellow, unisexual (dioecious), male and female flowers growing on separate plants.

**Blooming season:** Spring to late summer (April—September).

**Fruits:** One inch wide, globose, like a miniature melon, orange or red when ripe but green with pale mottled stripes early. Pulp yellowish filled with plump seeds. The thin-skinned, fleshy fruit is not edible.

**Cultivation and Propagation:** This plant is suited to greenhouse culture, but does well out of doors in Mediterranean climate, it responds well to cultivation and can eventually make a wonderfully unusual houseplant. Indoors they are often grown in shallow pots, with a tuft of wining stems emerging from a bulbous stem that seems to erupt from the soil. It is a plant for people who don't want a lot of work taking care of their plants, as it seems to thrive on neglect. Plants even five to ten years old are extremely nice.

Thanks to [lifle.com](http://lifle.com).





## CCCSS President's Message October 2022

There's not much to report this month, but last month's BBQ potluck meeting was a great success! After missing two December Holiday feasts, it was time to get together again and share a fantastic meal. Everyone seemed relaxed and there was ample time to visit and converse with our Cactus and Succulent loving friends. This year we will have our December potluck again. It's only two months away!

The Board was quite pleased to have the BOD meeting canceled and Mary was tickled that she did not have to take minutes for both meetings. What a great job she has been doing in recording the business and happenings of our Society. We have the best volunteers ever. Thanks again to all for making our Society the fantastic organization that it is....Harry



## ANNOUNCEMENTS-Cont'd

Hi Everyone,

Thank you all for joining in the Barbecue we had in September. It was a lot of fun.

Now I am asking you all to participate in our Holiday potluck for the December meeting. We will be back to normal I hope. I will have a signup sheet at the October meeting. Think about what you want to bring. Remember family members are included, but I do need to know how many are coming.

We will be having our *Silent & Live Auction*. Think again what you might want to contribute, there will be more information on that.

If you can't attend the meeting send me an email.

Pat Gilson ([hupt74@yahoo.com](mailto:hupt74@yahoo.com))





## CCCSS ASK US: WE WILL TRY TO HELP!!

GENE SCHROEDER & KATHIE MATSUYAMA ANSWER YOUR QUESTIONS

The CCCSS ASK US TABLE is available at CCCSS meetings or send us your questions. The online ASK US service is for Active CCCSS members only.

We will try to help with:

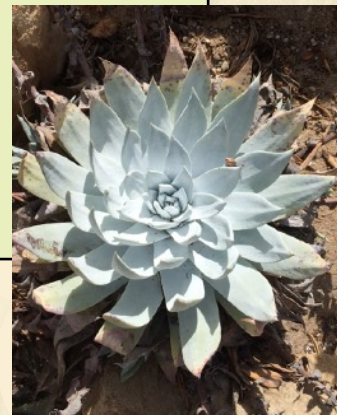
- Plant ID (Provide photos of the plant: 1) close-up of leaves, flowers, spines; 2) plant photo with a ruler, soda can or credit card for scale; and 3) plant photo showing where its grown (full sun, shade, in the ground?)
- Cultural Requirements (water, light, fertilizer, soil type)
- Pests & Other Problems
- Propagation

Please provide as much information as you can to help us answer your question. Microclimates matter, be sure to tell us where you live!

Send your ASK US questions to Gene Schroeder and Kathie Matsuyama at:

[AskMe@centralcoastcactus.org](mailto:AskMe@centralcoastcactus.org)

Happy and Healthy Growing!



### GARDEN GATHERINGS GROW GREAT SUCCULENTS

Interested in meeting more CCCSS club members while displaying your succulent collection and gardens? You should host a Garden Gathering!

#### Garden Gatherings FAQs:

**Health FIRST:** Garden Gathering hosts graciously invite us into their homes. Attendees must provide proof of being fully vaccinated.

**Who:** Only CCCSS members can attend. Hosts decide number of guests.

**What:** Garden Gatherings are social get-togethers with food, talk and a garden tour as the event focus.

**Where:** A CCCSS member hosts the event at their personal garden.

**When:** Hosts pick the event date and time. Events average one½ hours.

**How:** Paul and Kathie capably manage event pre-planning, organization, sign-

### GARDEN GATHERING PART I WITH JEANNE MILLER & MIKE BUSH

On Saturday September 17, 2022, two separate small groups of CCCSS members gathered at Jeanne Miller and Mike Bush's great garden and nursery in Los Osos for an extra special Garden Gathering. It was so fantastic; I will provide more details in Part 2 in next month's newsletter!

Stay tuned!!

We are very appreciative of Jeanne and Mike for hosting. Thank you, Jeanne and Mike!







## County offering free rainwater harvesting workshop

Posted: [5:35 am, September 28, 2022](#) by Paso Robles Daily News [News Staff](#)

### Residents invited to 'Rain Barrel Basics' clinic on Saturday, Oct. 8

– As California continues to grapple with the effects of historic drought throughout the state, the [County of San Luis Obispo](#) is inviting residents to learn more about rainwater harvesting and rain barrel installation.

“With severe drought persisting across the state and a still uncertain outlook for the coming winter, now is a great time to install a rain barrel,” said Deputy Director of County Public Works Kate Ballantyne. “The county is pleased to be working with our local partners to



encourage all forms of water conservation, as it's unlikely a single rainy season will replenish our local reservoirs.”

Residents are invited to register for a free “Rain Barrel Basics” clinic on Saturday, Oct. 8 at Farm Supply Company, San Luis Obispo. A panel of local experts will cover the essentials of operating a rainwater collection system, including rain barrel components, irrigation tips and techniques, and mosquito prevention.

“If you need some help getting started with rainwater collection, or are curious about how these systems work, this is a great opportunity to get your questions answered and do some hands-on learning,” said President of Farm Supply Company Cara Crye.

Staff from the UC Master Gardeners Program, Coastal San Luis Resource Conservation District, County Environmental Health Department, and Farm Supply Company Irrigation Department will be supporting the event.

Interested community members can register for the event by contacting Farm Supply Company by phone at (805) 540-6107 or via email at [askus@farmsupplycompany.com](mailto:askus@farmsupplycompany.com). This clinic is supported by the County of San Luis Obispo Stormwater Program [stormwater@co.slo.ca.us](mailto:stormwater@co.slo.ca.us).



# Pottery & Succulent Sale!

Saturday, Oct. 8th 10-4pm  
Sunday Oct. 9th. 11-4pm

Pottery by Mary Peracca &  
Richard Rowe  
Succulents by Linda Drake



## Location:

: Mary Peracca's House  
4486 Sunflower Way, SLO  
(805) 550-6977



Free garden tour



## ANNOUNCEMENTS-Cont'd



The Bi-annual SLOBG Plant Sale is an opportunity for growers and other horticulturally related organizations to show and sell their botanical items as well as to introduce the San Luis Obispo Botanical Garden to their community.

It will be held in the Gardens' Oak Glen Pavilion's outdoor concrete patio areas as well as in the plant sale area. The plant sale will take place on **Friday, October 28 from 10 until 4 (for garden members only) and then open to the public on Saturday, October 29th from 10 until 2 during our monthly "Free Day"**. Members and children under 12 are always free. October 28 - 29

**We're looking for volunteers to help with our CCCSS table** at SLOBG on Oct 28 9:00AM - 4:00 PM. Oct 29 10:00-2:00. I'll be there both days, but we'll need some additional help.

Mary Peracca registered CCCSS for a vendor space at the SFOBG event on Oct 28-29. I'll work the table those days, but I would love to have some other volunteers there with me. Is it possible to include this and ask for volunteers in the next newsletter?

Thanks,  
Peggy Heaney

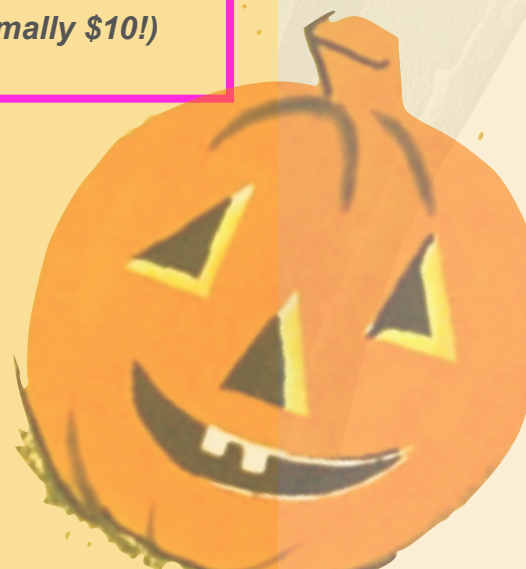
### ART IN THE GARDEN

Saturday, Nov. 5th 10AM - 5PM

Sunday, Nov. 6th 10AM - 4PM

35+ juried artists display and sell colorful glass work, paintings, pottery, succulent arrangements, exquisite jewelry designs, photography and more!  
Live Music featuring The Jill Knight Duo!

Tickets \$5 (*includes Garden Admission - normally \$10!*)





SATURDAY, OCT. 1 AND SUNDAY, OCT. 2, 10AM-5PM

2016 9th St. - Los Osos

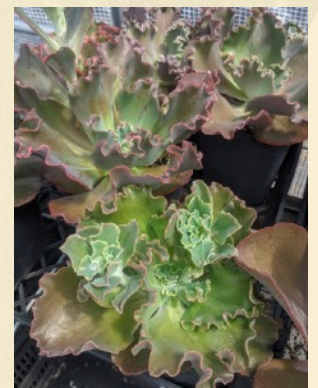
## Good Golly - We're Back With Poly!

Guest Vendor Cal Poly Horticulture is bringing amazing house plants and tropical plants to our

## Succulent Plants & Pottery Sale



Updates at  
[#wegrowslo](#)

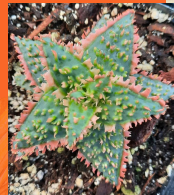




# Coastal Cornucopia Succulent Plants and Pottery Sale

NOVEMBER 5 (SAT.) & 6 (SUN.)

10AM - 4PM  
2016 9TH STREET, LOS OSOS



*Rare and unusual plants for the water wise garden*

**Steve Super Gardens** - 805.801.9973 - [stevesupergardens@gmail.com](mailto:stevesupergardens@gmail.com)  
[stevesupergardens.com](http://stevesupergardens.com) - on Etsy: **SteveSuperGardens**

*Functional & decorative ceramics; unusual tillandsias*

**Richard Rowe Clayworks** - 805.235.9721 - [roweclayworks@gmail.com](mailto:roweclayworks@gmail.com)  
387 'B' Quintana Road in Morro Bay - [roweclayworks.com](http://roweclayworks.com) - on Etsy: **RoweClayworks**

*Unique, well-grown succulent plants for the Central Coast*

**The Succ Shack** - 805.602.7817 - [calcoastsucculents@gmail.com](mailto:calcoastsucculents@gmail.com)  
Find our pop-up locations on Instagram: **TheSuccShack**

*Amazing succulent plants for containers and landscape*

**GROW Nursery/Botanica Nova** - 805.305.9292 - [nick@grownursery.com](mailto:nick@grownursery.com)  
[grownursery.com](http://grownursery.com) - 2024 Main Street in Cambria (enter through The Garden Shed)

**FREE** potting-up service  
for your new plants and Rowe pots!  
**NEW** demonstration & education booth!



A portion of proceeds benefits Hope's Village of SLO, a 501 (c)3 organization planning a model sustainable community village of tiny houses for chronically unhoused veterans and other people who have little or no income here on the Central COast of California.

**FOR UPDATES:**  
**#wegrowslo**

ANNOUNCEMENTS-Cont'd

YES, it's OPEN STUDIO ART TOUR again!

**Maggie Wagner & Ben Trogdon invite you to our  
2022 Open Studio Art Tour**

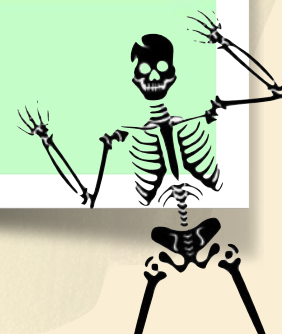
October 8/9 from 10am to 5pm

273 Blue Sky Drive, Arroyo Grande 93420

**Plants, Pots & Ceramics for Sale - Open Greenhouse**



***www.PSCS.US*** email: *pacsunceramics@gmail.com*  
We are: PSCS.US #23 in the catalog online at: <https://slocountyarts.org/osat>





## Stefan Burger:

### Presented to the CSSA Conservation Committee *Ethically Sourced Cacti and Succulents: Insights and Examples*

This is a 10 minute video which illustrates examples of poached plants vs. ethically sourced plants.

<https://youtu.be/VAYxg1Jh9jk>

**Join us Saturday, October 1st at 10:00 a.m. PDT for the next in our series of webinars featuring Cactus and Succulent experts from around the world.**

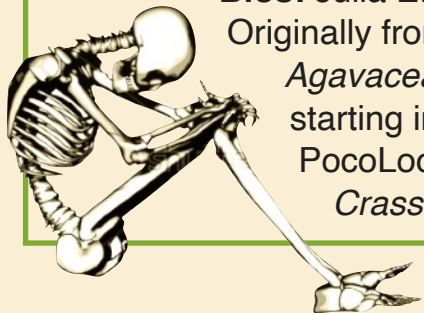
**Julia Etter and Martin Kristen: *A glimpse of the Natural beauty of Chiapas***

[Registration link](#)

We'll be taking you on a sightseeing tour to many localities of *Agaves* and *Crassulaceae* in the southeastern-most corner of Mexico, mainly in the state of Chiapas. As always it's not only about *Agaves* and *Echeverias*, but we'd like to encourage people to get further south than Oaxaca and explore the beauty of Chiapas, a state that has it all: fabulous plants, wildlife, hidden archaeological sites, spectacular landscapes, and colorful towns and villages.

**Bios:** Julia Etter and Martin Kristen

Originally from Switzerland and Austria, Julia and Martin have focused on the *Agavaceae* and *Crassulaceae* since 1989, which led to extensive field research starting in 1997. For several years they lived in their Unimog expedition vehicle PocoLoco, travelling through the US and Mexico taking pictures of and studying *Crassulaceae* and *Agavaceae*. They relocated to Jalisco, Mexico, almost 20



## Announcements - cont'd

years ago and are now (practically) Mexican. They are busy tending to the plants in their garden and greenhouse, caring for a large flock of chickens and seven cats, and of course trying to get into the field as much as possible. Since 2009 they have been working together with botanists of the Institute of Biology of the Mexican university UNAM and the University of Guadalajara. *Agave kristenii*, *Echeveria juliana*, *E. kristenii*, *Graptopetalum kristenii*, and *Sedum kristenii* are named in their honor. Their photographs and articles have been published widely in books and journals, and on the internet. More info can be found on their websites at [globetrotters.ch](http://globetrotters.ch) [agavaceae.com](http://agavaceae.com) and [crassulaceae.com](http://crassulaceae.com).



Middle Left: *Agave chiapensis*  
Middle Right: *Echeveria goldmanii*  
Lower Left: *Hechtia glomerata*  
Lower Right: *Agave isthmensis*



## BRAG PLANTS

Please send photos of your brag plants to [carolmortensen0@gmail.com](mailto:carolmortensen0@gmail.com) for the next newsletter.

Thank you Janis for your photos!

I've had this [Espostoa lanata](#) since Xmas 2018.

I don't understand why it only flowers in the morning, as the flowers are only pollinated by bats. (Nature is strange at times.)

It is 38" from top dirt in the pot. Has grown 4" since 2018, slow grower. Just started blooming in 2019. Last year it bloomed 4 times and this year, only twice.

The bottom cactus is a variegated Ferocactus. The pot is 12" across. It is a 1/3 larger than when I got in 2019. Wished I had bought the multiple headed one!



## BRAG PLANTS - cont'd

A beauty from Mary & Harry's collection.

*Ariocarpus retusus* ssp. *confusus*

After blooming the flowers retreat back into the plant to make seed.



*Leuchtenbergia*  
From Carol Mortensen



PLEASE SUPPORT OUR BUSINESS MEMBERS!



**Peracca's Prickly Pottery**

*Textured hand built planters designed for cactus and succulents*

Sales and garden tours by appointment

**Mary Peracca**  
(805) 550-6977



maryper777@gmail.com  
Instagram: maryperacca

**STEVE SUPER GARDENS**

SPECIALIZING IN RARE AND UNUSUAL PLANTS  
FOR THE WATER WISE GARDEN

STEVESUPERGARDENS.COM  
STEVESUPERGARDENS@CHARTER.NET

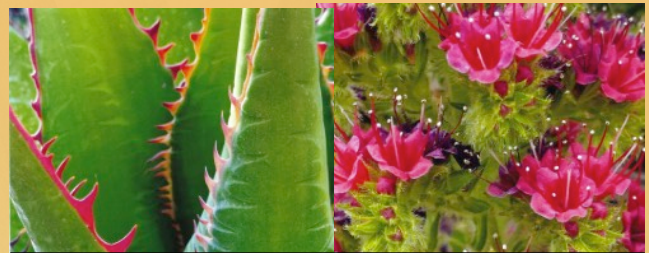
**CLAYWORKS POTTERY**



**Richard Rowe**  
805.235.9721

roweclayworks@att.net

www.galleryatthenetwork.com



**Linda Drake Succulent Sales**

[lindakathleendrake@gmail.com](mailto:lindakathleendrake@gmail.com)

805-748-7405

**15% FOR CCSS MEMBERS**



2024 MAIN ST | GROWNURSERY.COM | 805.924.1340

Follow us!

Instagram: @thesuccshack

Facebook: CalCoast Succulents

Jeanne Miller 805.602.7817

Mike Bush 805.452.6817

**CalCoast Succulents**

[calcoastsucculents@gmail.com](mailto:calcoastsucculents@gmail.com)

**PLANTERA PRIMAL**

Stoneware ceramic planters and tiles fired with solar generated electricity. See website for sales venues. Contact for private appointment.

Charles Varni, Oceano, CA

Ph 805.459.6698

[www.varni.org](http://www.varni.org)



[charles@varni.org](mailto:charles@varni.org)



**Cal Seedling Co.**

Jenna Cismowski

Assist. Office Mgr/Customer Service

1149 Arboles Way  
Arroyo Grande Ca 93420

805-489-6548  
[jenna@calseedling.com](mailto:jenna@calseedling.com)  
[www.calseedling.com](http://www.calseedling.com)

Please try to support local businesses as much as possible, including our valued Business Members on these pages. Click on images to visit their websites or to contact them via email. Many will take online or phone orders. Some are now on Etsy!

You can advertise on these pages by becoming a Business Member of CCCSS.



**FARM SUPPLY**  
— EST. 1910 —  
COMPANY

— We Have Four Locations To Serve You —

224 Tank Farm Road San Luis Obispo, CA 93401 805.543.3751 • FAX 805.543.0613	1108 Paso Robles Street Paso Robles, CA 93446 805.238.1177 • FAX 805.238.3527
1079 El Camino Real Arroyo Grande, CA 93420 805.489.5514 • FAX 805.473.7263	1920 N. Broadway Santa Maria, CA 93454 805.922.2737 • FAX 805.922.6982

**SLO Growers**

San Luis Obispo County, California  
[www.slogrowers.com](http://www.slogrowers.com)

**Robin Sims**  
slogrower@gmail.com



**PSCS**

**Ben Trogdon & Maggie Wagner**  
Pacific Sun Ceramics and Succulents  
273 Blue Sky Drive  
Arroyo Grande, CA 93420  
[www.PSCS.US](http://www.PSCS.US) • [pacsunceramics@gmail.com](mailto:pacsunceramics@gmail.com)

**DESERT CREATIONS**



North Hills, CA  
[www.desertcreations.net](http://www.desertcreations.net)  
(818) 482-8795  
*'Home of unusual succulents and cactus'*



**Stephanie Arehart  
Ceramics**

**Instagram**  
[stephaniearehartceramics](https://www.instagram.com/stephaniearehartceramics)

**email**  
[stephaniearehartceramics@gmail.com](mailto:stephaniearehartceramics@gmail.com)

**Better  
Homes  
and Gardens.**  
REAL ESTATE

**HAVEN  
PROPERTIES**

**BARBARA BROOKS**  
BROKER ASSOCIATE

**805.680.1389**

[BarbaraHBrooks@sbcglobal.net](mailto:BarbaraHBrooks@sbcglobal.net)  
[www.HavenSLO.com](http://www.HavenSLO.com)

441 Marsh Street  
San Luis Obispo, CA 93401

An Independently Owned  
and Operated Franchise. LIC 01227626



**Growing Grounds**  
DOWNTOWN  
Plants & Gifts for a Cause

San Luis Obispo, CA 93401  
Phone: 805-544-4967  
Email: [ggdstore@t-mha.org](mailto:ggdstore@t-mha.org)

*Inspiring hope, growth,  
recovery and wellness in our  
communities.*  
[www.tmha.org](http://www.tmha.org)

## CCCSS BOARD OF DIRECTORS & OFFICERS

President	Harry Harlow
Vice President	Bill Findley
Secretary	Mary Harlow
Treasurer	Kathy Goss
Publicity	Peggy Heaney
Hospitality	Pat Gilson
Membership	Laura Oliver
Past President	Loring Manley
CSSA Affiliate	Rob Skillin
Member-at-large 1	Natasha Erikson
Member-at-large 2	Karen Kolba
Member-at-large 3	Mary Peracca
Newsletter Editor	Carol Mortensen

**General Club Email Address:** [info@centralcoastcactus.org](mailto:info@centralcoastcactus.org)

