



# ON THE DRY SIDE

In This Issue:

Speaker for Meeting

Gabriel Frank

Plant of the Month Echeveria

Announcements

Meeting Minutes

Letter from the President  
"Ask Me Table"

Brag Plants

Business Members

Board Members



The Club desperately needs a Member to handle our Publicity for the Show and Sale . . . Are you interested?  
Please Text [harryharlow229@gmail.com](mailto:harryharlow229@gmail.com)

## About His Book: Striking Succulent Gardens

*Striking Succulent Gardens* will inspire anyone who loves succulents, especially if you live where you can grow a whole garden of them. But for Frank they're far more than just beautiful plants. He emphasizes their value for gardens where water is increasingly scarce, as an ecologically sensitive and money-saving choice. His design advice is geared to the do-it-yourself gardener and to collectors who want their succulent gardens to have a strong, pleasing design, not be just a hodgepodge of cool plants.

Standard concepts like rhythm, form, texture, contrast, and scale are helpfully illustrated with succulent garden photos so you can understand just what he means.

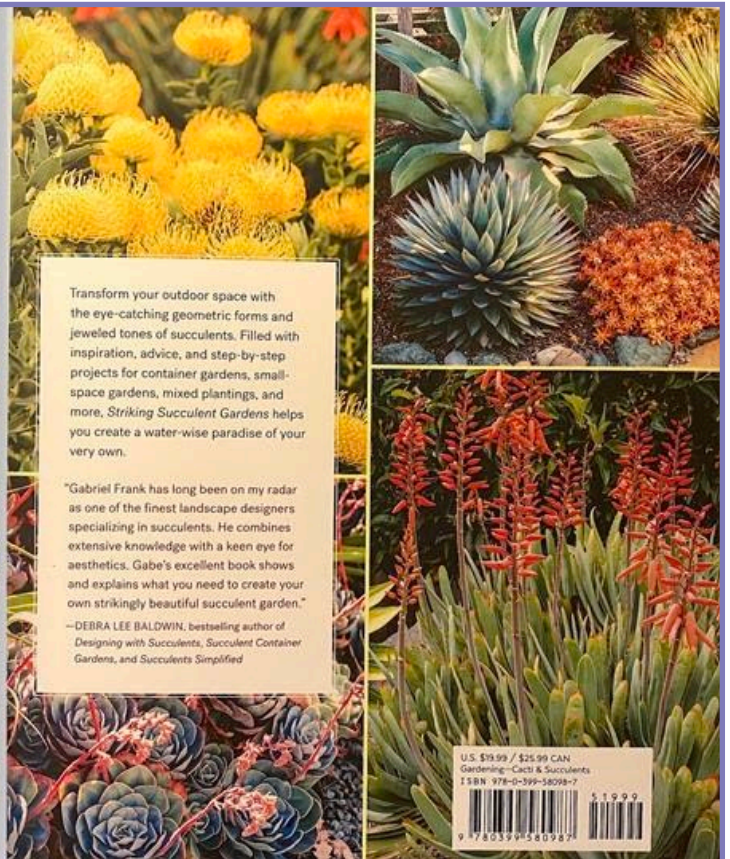
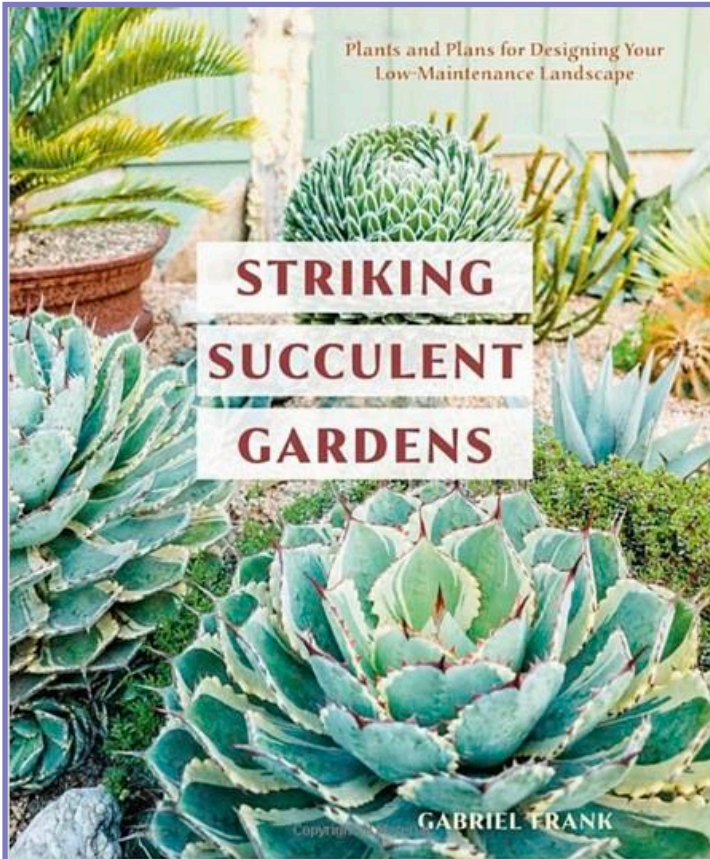
## About Our May Speaker

Gabriel Frank is the founder of Gardens By Gabriel, a design + build firm based on the central coast known for its distinctive water wise landscapes. A graduate of the School of Professional Horticulture at the New York Botanical Garden, he has been honored by America in Bloom, Better Homes and Gardens, and Obispo Beautiful.

Presentation: Striking Succulent Gardens: Dive into the bountiful world of succulent plants with landscaper Gabriel Frank as your guide. Take a virtual walk through garden imagery, highlighting essential succulent families and how to showcase them in your own garden – from sensually soft echeveria aeonium rosettes to structurally stalwart aloes and agaves. Gabriel will elaborate on design principles, materials, and techniques to help gardeners with plots of any size to succeed in working with these water-wise allies.



# SPEAKER OF THE MONTH —Continued



## Gardens By Gabriel



SPEAKER OF THE MONTH —Continued



**Gardens By Gabriel**



## PLANT OF THE MONTH

***Echeveria***: genus of about 150 species of succulent plants in the stonecrop (Crassulaceae) family, native from Texas to Argentina. Many are popularly called hen-and-chicks (along with *Sempervivums*) because of the way new plantlets, or offsets, develop in a cluster around the parent plant. *Echeverias* have also been called house leeks for their habit of growing on thatched roofs. The usually broad, fleshy leaves which have waxy, velvety or powdery surfaces are often iridescent and sometimes red-edged when in bright sunlight. *Echeverias* are popular with collectors of succulent plants for their compact and symmetrical leaf rosette, prominent stalked inflorescence and ease of cultivation.

The smaller species, such as the wax rosette (*Echeveria* × *gilva*), the pearl echeveria (*E. elegans*; also called Mexican snowball), and the plush plant (*E. pulvinata*) are handsome as small pot plants or in dish gardens along with other succulent species. Larger echeverias, such as *E. gibbiflora*, red echeveria (*E. coccinea*), and copper roses (*E. multicaulis*), are common in Mexican and southwestern American gardens.

Adapted from [brittanica.com](http://brittanica.com) by Markus Mumper



*Echeveria pulvinata*



*Echeverria gibbiflora* hybrid



*Echeveria elegans*



*Echeveria multicaulis*

# ANNOUNCEMENTS

## CCCSS Meetings summary April 11, 2021

### General meeting:

- 53 “screens” in attendance
- Harry opened the meeting with general announcements:
  - Richard Rowe, plant sale April 24
  - 41 plants in the plant giveaway today
  - Botanical Garden update: Some donated money is leftover & will be used to buy plants.
  - You must be a business member to advertise in the Newsletter. New fiscal year starts July 1.
  - Show & Sale tentatively scheduled for September 24, 25, 26. The S&S committee will start meeting in May to plan the event.
  - Plant giveaway & pick up information reviewed.
- Bill Findley introduced Ann Erb
  - After a few technical glitches (Note: Do not leave your Smartphone in the sun!), Ann gave a very interesting and informative demonstration on how to “Bonsai” succulent plants. She reviewed which plants to choose, trimming techniques for foliage & roots and how to repot and secure the trimmed plant. Thank you Ann! And thanks to John for the videography.
- Gabriel Frank will be our speaker in May.
- The plant giveaway went well. Pick up is April 18 at the Odd Fellows Hall.

### Board of Directors Meeting:

- SLOBG update: We have \$165 left over from donations. Mary P is going to go to Native Sons to buy some plants for the garden. The Garden is looking good. The volunteer help is much appreciated.
- Plant pickup went well. Rob probably has enough plant stock for 2 more giveaways. Harry will ask for a few more donations of plants at the next meeting.
- Vendors were notified for our tentative Sept dates for the Show & Sale.
- Gene & Kathie have requested a dedicated email address for the “Ask Me” questions. Loring will work with our web master to set this up.
- There was discussion on a future presentation on fertilization and pH balance for our plants. Loring & Bill will work on this. Rob suggested a speaker.
- A new BOD should be seated in June. All current members have agreed to stay on. **We still need someone for the open position of Publicity. Please let the BOD know if you are interested in this position.**
- Harry is going to write to the Parking Authority for the City of SLO regarding the new restricted parking on Dana Street.

Submitted by Mary Harlow, Secretary

## ANNOUNCEMENTS - Continued

### **President's Message May 2021 Newsletter**

Parking on the street in front of the Odd Fellows Hall has recently been posted as "by Permit only". Tenants of the Odd Fellows Hall are now excluded from on-street parking. I have written a letter to the SLO City Parking Authority to challenge this restriction, but have not heard back from them. We may need your help if we cannot get an exception to this new parking rule. Hopefully the good folks who reside on Dana Street will support us in using the street in front of the Hall one Sunday afternoon a month.

The upcoming Show & Sale scheduled for September 24, 25, 26 will be getting organized in the next few months. I expect everyone on staff will be fully vaccinated and that the County will allow us to have this event. Rob has contacted the vendors and they are eager to participate. It will certainly be different to be in a room full of people again!

Show & Sale rules state that you must have owned your plant for at least 6 months prior to the Show. We have a special award category for first time entries. Please consider entering a plant you love for us to see. Hopefully we will have lots of plants to purchase as well as a fabulous Show!

After this month's plant giveaway, we will be requesting plant donations again at the next plant pick up day (May 16). We will have a drive by area for giveaway plants to pick up and then volunteers will direct you to the plant donation site. Rob has reported that his usual sources for plant buying are depleted of specimen plants due to the popularity of gardening during the pandemic.

We will also be having a book sale and signing by Gabriel Frank (our featured speaker this month) on plant pick up day. Volunteers will direct you to his table as well.

So....we'll "see" you at the meeting on May 9<sup>th</sup> & hopefully really see you on May 16<sup>th</sup> for the plant pickup, plant donation & book signing event.....Harry

# ANNOUNCEMENTS

## MEMBERSHIP DUES NEWS

The notification of membership status that went out on February 17 created a little confusion, and we apologize. To clear things up, the only members needing to send in a payment now are those whose membership was shown to have expired on 6/31/2020.

- If you have sent in your payment, thank you.
- If your expiration date was shown as 6/31/2021 and you sent a payment, you have been credited for the 2021/2022 year, and will not need to pay this coming June.
- Another update on membership status will be sent in June, so everyone will know their status before the end of this membership year.

**Please welcome Laura Oliver as the new Membership Chairperson.** She is taking over as Terry Skillin steps down. Thank you Terry for filling this important job for the club over the last year!

Any membership dues should now be paid to:

CCCSS	Dues are:
c/o Laura Oliver	Individual \$20
1585 Saratoga Ave	Family \$25
	Business \$40

Grover Beach, CA 93433

ph 310-951-0591

## ANNOUNCEMENTS



Botanical garden update from Mary Peracca:

The garden crew has been busy planting new succulents at the garden. We have all brought in new plants from our gardens. I was able to buy 10 *Dudleya brittonias* from Native Sons Nursery. The funds for this came from the cinder money all of you donated when you picked up your raffle plants! Thanks for your contribution to the garden project. You can see three of the *Dudleyas* in this photo. The other plants are *Cotyledon orbiculata* and *Scenio serpens*. We will continue to add plants to the aloe garden area as well as the amphitheater area.

Mary





## CCCSS ASK ME TABLE GOES VIRTUAL!!!

Do you have a prickly cactus question or a squishy succulent issue? The CCCSS ASK ME TABLE is going VIRTUAL! You can now send your questions to our venerable expert Cactophile Gene Schroeder and Succulentophile Kathie Matsuyama. Due to the overwhelming number of ASK ME requests we are receiving you must be an Active Member of CCCSS to participate.

Examples of issues we will try to help with include:

- ID of Plants (provide 3 photos of the plant: 1) close-up of leaves, flowers, spines; 2) general photo of the plant with something in the photo that indicates scale....a ruler, soda can or credit card; and 3) a photo of the plant in its environment (is the plant in full sun, under a porch, planted in the landscape?)
- Watering & Light Requirements
- Feeding & Fertilization
- Pests & Problems
- Soil & Amendments
- Propagation



*Aloe pseudorubroviolacea*

Please email good photos of your plant. Also provide all the background information you think necessary to help us answer your question. Tell us which city you live in; microclimates in our region provide vastly different growing conditions! We will email you with our thoughts. Your plant question might be featured in a future ASK ME TABLE Newsletter column!

Don't forget to renew your CCCSS membership today! And send your ASK ME questions to Gene Schroeder and Kathie Matsuyama at: [AskMe@centralcoastcactus.org](mailto:AskMe@centralcoastcactus.org)

Happy Growing!



*Cheiridopsis* sp.



Photos by Kathie Matsuyama

## ANNOUNCEMENTS—Continued



### ASK ME TABLE . .

Hi Gene,

Can you help me ID these 2 cactus? To know the genus would help me better care for them. They grow in a small 18' x 10' greenhouse in Los Osos.

After several years, neither have bloomed.

Thank you,

Laurel Carlisle

The first plant is most likely *Ferocactus macrodiscus* ... a bit too young to flower but the flattened lower spine and single central spine are pretty good ID points.

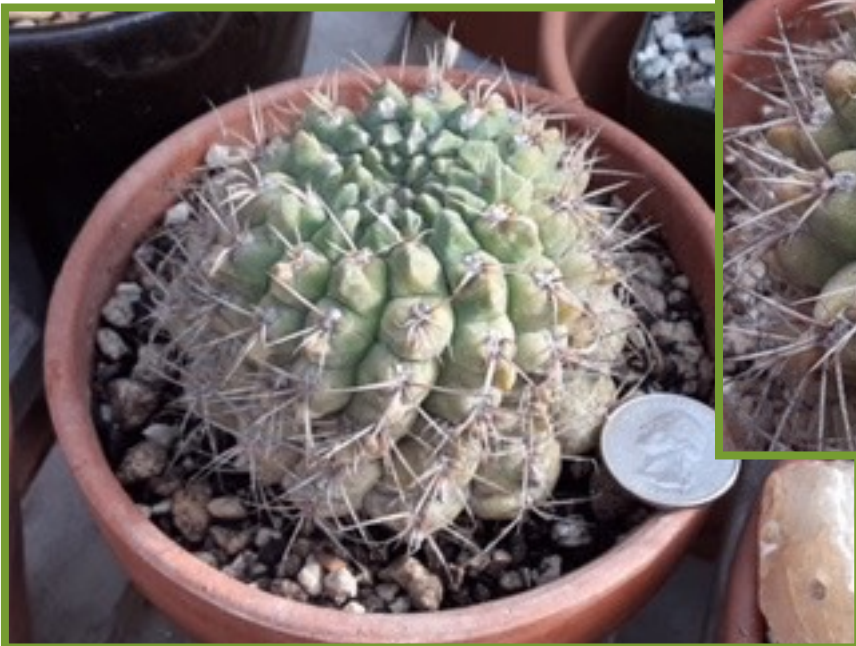


Check here for info:

<https://worldofsucculents.com/ferocactus-macrodiscus/>

The second is just a guess but likely a *Gymnocalycium* ... species undetermined without flowers! Once it flowers ... likely late summer, send us another image!

Cheers ... Gene



## ANNOUNCEMENTS—Continued



### ASK ME TABLE . .

Kathie, I was told this is a 'true' aloe vera; I'm puzzled with the pups which are developing off the main stem rather than away from the mother plant. Any ideas?

Hi Gary:

My “partner in crime” at the “Virtual Ask Me Table” is Gene Schroeder. He has been growing cactus and succulents for decades. Although he is hands down our resident cactus expert in the CCCSS club, he is also extremely knowledgeable about Aloes.



He says that Aloe vera has been in cultivation for so long that there is a fair degree of variability in the species. Therefore, in his opinion, if the your plant fits the accepted Aloe vera description: leaf details (form, count, edge detail-teeth, and size); inflorescence detail (structure, flower detail including color), then he would call it a normal form

Aloe vera will normally form offsets at root level but .....if grown in a situation with inadequate root room - like a seriously undersize pot, it is not unusual to see offsets coming from what is normally a stemless plant. Since Aloe vera usually forms large clumps you need to give it room to do so.

But, since your plant is growing in the ground and not subjected to inadequate root room, that doesn't really explain the offsets on the stem. I spent some time googling the topic to see what I could find. Unfortunately, nothing came up that directly addressed your exact situation.

At the end of the day, I guess you are lucky to have a rapidly pupping Aloe vera to use in your garden and share with your friends. When I taught Lifelong Learner classes on growing succulents in containers and the landscape, I told my seminar participants the one Aloe they should all grow at home is Aloe vera. Its ability to stop the pain of a kitchen burn and reduce the size of the resulting blister is unparalleled!

Thanks for your question, Gary.  
Kathie Matsuyama

## ANNOUNCEMENTS—Continued

### ASK ME TABLE . .



### IS MY PLANT PROBLEM INSECTS OR WEATHER DAMAGE??

The Virtual **ASK ME TABLE** received a question from Darlene regarding the pitted leaves on her plants. Was this caused by insects or environmental damage?

Gene quickly id'd this as a classic case of hail damage. If you look at the underside of your plant's leaves you can verify this. Pitting will occur on the top of the leaves, none underneath. New growth shows no pitting, but damaged leaves will not recover. Pruning back or removing damaged leaves will encourage new growth.

**ASK ME TABLE's** Kathie Matsuyama lives on a Nipomo ridge where frost or hail is extremely rare. But she can get "hail" damage when the air around her house is cold and foggy. It drips onto plants when overnight temps get very cold and creates the same kind of damage seen on plants subjected to hail.

**ASK ME TABLE's** Gene Schroeder lives within walking distance from Kathie's house but down a very steep road. Remember that warm air rises and cold air sinks. Gene can get heavy frost at his house as seen in his February photo. It looks like snow! Microclimates matter!

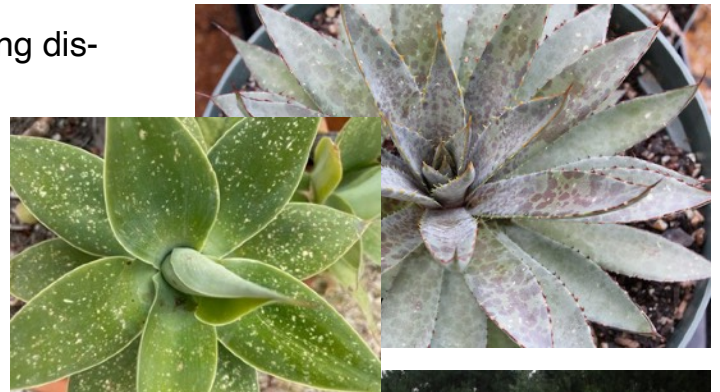
It can help to shelter your plants with frost cloth from your hardware store when temps will be close to freezing. Frost blankets work by excluding cold air and creating an insulating air pocket around plants. Heat from soil, which is warmer than air, is trapped beneath the cloth and held near plants.

Remember wet and cold succulents can become dead succulents very quickly! Water carefully and infrequently in the winter. Many succulents and cactus are winter dormant or need less water than in warmer months. Know your plants; watering is dependent on species and where plants originate from.

For more info: [Managing Pests in Gardens: Environmental Factors: Hail—UC IPM \(ucanr.edu\)](https://ucanr.edu/extension/pests-in-gardens-environmental-factors-hail)

Do you have a question for the ASK ME TABLE? If you are a CCCSS member send your question to Gene Schroeder and Kathie Matsuyama at: [AskMe@centralcoastcactus.org](mailto:AskMe@centralcoastcactus.org)

**Happy Growing!**



## ANNOUNCEMENTS—Continued



Upcoming Events at SLOBG: Spring Plant Sale, Art in the Garden, and Mother's Day BBQ

**Spring Plant Sale: April 30 - May 2, 10 AM - 5 PM**

Looking for some new color to add to your garden? Come visit SLOBG's Spring Plant Sale and find the perfect plant for your home! The sale will feature plants from Mediterranean climate zones that are ideally suited for our own California Central Coast climate.

Friday, April 30 will be open to Garden Members only and will receive 15% all plants. The sale is open to the public Saturday, May 1 and Sunday, May 2! Click [here](#) for more information on the event or visit [slobg.org](http://slobg.org).



**Art in the Garden: April 30 - May 16, Thursdays through Sundays, 11 AM - 5 PM**

The 2021 Art in the Garden art show features 14 well-respected local artists. This show will include jewelry, glass, paintings, wood, ceramics, photographs and more. Visitors will find art for the home and garden, unique hostess gifts, as well as one-of-a-kind jewelry. There will be something for everyone!



The art show is free to attend and will be held in the Oak Glen Pavilion near the main office building. To check out featured artists, artist demonstrations, and food truck times, click [here](#) or visit [slobg.org](http://slobg.org)!

## ANNOUNCEMENTS—Continued

### San Luis Obispo Botanical Garden Presents: Mother's Day BBQ at the Garden!

SAN LUIS OBISPO, CA – Pack your picnic blanket and join us for our Mother's Day BBQ Sunday, May 9th at SLO Botanical Garden! Treat Mom to a choice of tri-tip, chicken, or vegetarian meals for two. Pick up your food between 2 PM - 4 PM and enjoy live music by multi-genre violinist Brynn Albanese! The Garden will be open until sunset for guests to picnic.

Place your order(s) by noon on Monday, May 3rd. Meals are \$35 for Garden Members and \$40 for non-members. Your purchase comes with one free admission to the Garden (\$5 value) and a complimentary succulent plant for Mom! Wine and non-alcoholic beverages will be available for purchase. Click [here](#) to place your order now!

Event & Meal Order URL: <https://www.slobg.org/calendar/bbq>

Contact phone number: (805) 541-1400

For more information on the event, visit [slobg.org](http://slobg.org) and view our event calendar.

### About San Luis Obispo Botanical Garden

The San Luis Obispo Botanical Garden is a non-profit organization that showcases plants from Mediterranean climates throughout the world. Through its programs and facilities, the Garden fosters an appreciation and understanding of the relationship between people and nature and encourages a sense of stewardship for the natural environment. The Garden is located at [3450 Dairy Creek Rd.](#), within El Chorro Regional Park off Highway 1 between Morro Bay and San Luis Obispo. Admission is \$5 per person and free for both children 12 and under and Garden Members. To learn more visit [slobg.org](http://slobg.org) or the SLO Botanical Garden Facebook page.

3450 Dairy Creek Road  
slobg.org  
San Luis Obispo, CA 93405



## ANNOUNCEMENTS—Continued

### The Desert Under- ground: Exposing a Valuable Hidden World Under Our Feet

**May 13, 5:00 pm - 6:15  
pm PDT**

**Speaker:** Robin Kobaly

**Cost:** Free of Charge

[Register Here!](#)

Exposing a Valuable Hidden World Under Our Feet

Through original artwork, graphics, and photography, Robin will lead her guests on a virtual tour of the desert underground. This “tour” reveals the amazing partnerships that connect every native plant underground across the landscape. Journey through the interlocking biological and geological systems that work together to gather, move, and share resources, pass information between plants, create a surprising carbon sponge, and help to combat climate change wherever desert soils remain intact. It may be the first time you appreciate caliche! You won’t believe what is happening under our feet.

#### *Presenter Background*

Robin Kobaly is a botanist and plant ecologist with expertise in plant communities across the American southwest. She is Executive Director of The SummerTree Institute ([www.summertree.org](http://www.summertree.org)), and President and cofounder of The Power of Plants ([www.powerofplants.com](http://www.powerofplants.com)). Robin has bachelors and masters degrees in Biology and Plant Ecology from the University of California, Riverside, with three decades of experience in plant ecology, wildlife biology, land use management, aerial photo interpretation, and natural history interpretation. Her popular seminars and workshops examine the astonishing ages of ancient desert plants and their value to ecosystem sustainability, ethnobotanical and landscape uses of native plants, and the almost magical things happening underground in desert soils.

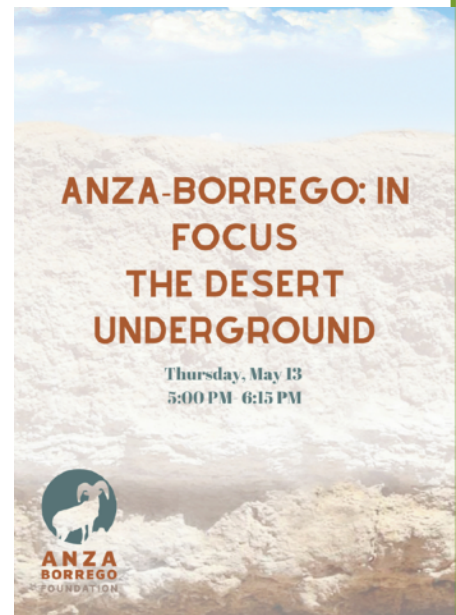
Anza-Borrego Foundation  
587 Palm Canyon Dr. #122  
PO Box 2001  
Borrego Springs, CA 92004

760-767-0446  
info@theabf.org  
www.theABF.org



**ANZA  
BORREGO**  
FOUNDATION

Our mission is to protect and preserve the natural landscapes, wildlife habitat and cultural heritage of Anza-Borrego Desert State Park and its surrounding region for the benefit and enjoyment of present and future generations.



## Pottery Sale!

Saturday, May 8th, I will be selling my pottery at a benefit craft and food fair in Santa Margarita from 10:00-4:00 at Caliwala Market.

22202 El Camino Real.  
I hope to see you there!

**Artisan Craft & Food Sale**

**Handmade goods by 20 local vendors**

Indoor & outdoor sale! Masks & distancing required for safety

20% of proceeds toward Caliwala's meals for ECHO Homeless Shelter

**Saturday, May 8th, 10 am - 4 pm**

**22202 El Camino Real, Santa Margarita 93453 | (805) 748-2998**



# COOL AND COLLECTED

## Succulent Plants and Pottery Sale

JUNE 18 (FRI.) 11AM - 6PM

JUNE 19 (SAT.) 9AM - 4PM

2016 9TH STREET, LOS OSOS

*Rare and unusual plants for the water wise garden*

**Steve Super Gardens** - 805.801.9973 - stevesupergardens@gmail.com  
stevesupergardens.com - on Etsy: **SteveSuperGardens**

*Functional & decorative ceramics; unusual tillandsias*

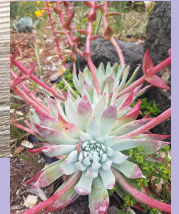
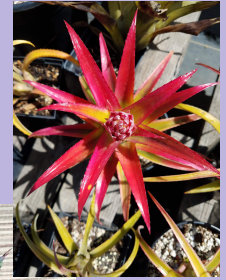
**Richard Rowe Clayworks** - 805.235.9721 - roweclayworks@gmail.com  
387 'B' Quintana Road in Morro Bay  
roweclayworks.com - on Etsy: **RoweClayworks**

*Unique, well-grown succulent plants for the Central Coast*

**The Succ Shack** - 805.602.7817 - calcoastsucculents@gmail.com  
Find our pop-up locations on Instagram: **TheSuccShack**

*Amazing succulent plants for containers and landscape*

**GROW Nursery/Botanica Nova** - 805.305.9292 - nick@grownursery.com  
2024 Main Street in Cambria - enter through The Garden Shed  
grownursery.com



FOR UPDATES:  
#wegrowslo



A portion of proceeds benefits SLO Food Bank, a 501(c)3 organization whose mission is to work with a network of community partners to alleviate hunger in San Luis Obispo County and build a healthier community.

**NO EARLY BROWSING. NO EARLY SALES.**  
*STRICTLY ENFORCED FOR EVERYONE'S SAFETY DURING SETUP.*

**MASKS and physical distancing required.**

## BRAG PLANTS

From Kris Gorsuch

We have several common garden variety kalanchoe plants in our yard and in pots. But I have never seen one bloom like this. The flower stalk is 23 inches tall. I thought some members might find it interesting.



PLEASE SUPPORT OUR BUSINESS MEMBERS!

### Peracca's Prickly Pottery

Textured hand built planters designed for cactus and succulents

Sales and garden tours by appointment

Mary Peracca  
(805) 550-6977



maryper777@gmail.com  
Instagram: maryperacca

### STEVE SUPER GARDENS

SPECIALIZING IN RARE AND UNUSUAL PLANTS  
FOR THE WATER WISE GARDEN

STEVESUPERGARDENS.COM  
STEVESUPERGARDENS@CHARTER.NET

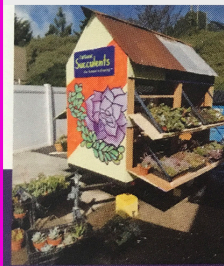
### CLAYWORKS POTTERY



Richard Rowe  
805.235.9721  
roweclayworks@att.net



www.galleryatthenetwork.com



Follow us!

Instagram: @thesuccshack  
Facebook: CalCoast Succulents

Jeanne Miller 805.602.7817  
Mike Bush 805.452.6817

CalCoast  
Succulents

calcoastsucculents@gmail.com

15% FOR CCCSS MEMBERS



grow  
rare & unusual succulents

2024 MAIN ST | GROWNURSERY.COM | 805.924.1340

### Bonny Berta's Beautiful Succulents

805.434.8391

Stunning  
Succulent  
Arrangements

yodaleap@outlook.com

### PLANTERA PRIMAL

Stoneware ceramic planters and tiles fired with solar generated electricity. See website for sales venues. Contact for private appointment.

Charles Varni, Oceano, CA  
Ph 805.459.6698  
www.varni.org



charles@varni.org



### Cal Seedling Co.

Jenna Cismowski  
Assist. Office Mgr./Customer Service

1149 Arboles Way  
Arroyo Grande Ca 93420

805-489-6548  
jenna@calseedling.com  
www.calseedling.com

Please try to support local businesses as much as possible, including our valued Business Members on these pages. Click on images to visit their websites or to contact them via email. Many will take online or phone orders. Some are now on Etsy!



Aurelia Flora  
Floral Design for Weddings  
and Special Events

[www.aureliaflora.com](http://www.aureliaflora.com)

Follow on Instagram:  
@aurelia.flora  
Say Hello:  
[inquiry@aureliaflora.com](mailto:inquiry@aureliaflora.com)



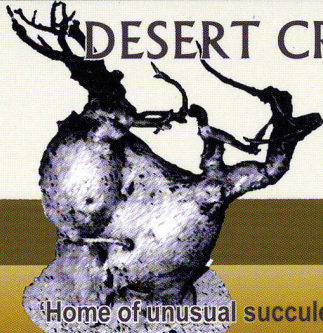
San Luis Obispo County, California  
[www.slogrowers.com](http://www.slogrowers.com)

Robin Sims  
[slogrower@gmail.com](mailto:slogrower@gmail.com)



*We Have Four Locations To Serve You*


224 Tank Farm Road San Luis Obispo, CA 93401 805.543.3751 • FAX 805.543.0613	1108 Paso Robles Street Paso Robles, CA 93446 805.238.1177 • FAX 805.238.3527
1079 El Camino Real Arroyo Grande, CA 93420 805.489.5514 • FAX 805.473.7263	1920 N. Broadway Santa Maria, CA 93454 805.922.2737 • FAX 805.922.6982



DESERT CREATIONS

North Hills, CA  
[www.desertcreations.net](http://www.desertcreations.net)  
(818) 482-8795

Home of unusual succulents and cactus'



**Stephanie Arehart Ceramics**  
**Handmade Ceramic Vessels**  
*For Online Sales & Info:*  
[stephaniearehartceramics.com](http://stephaniearehartceramics.com)



**HAVEN  
PROPERTIES**

**BARBARA BROOKS**  
BROKER ASSOCIATE

**805.680.1389**

[BarbaraHBrooks@sbcglobal.net](mailto:BarbaraHBrooks@sbcglobal.net)  
[www.HavenSLO.com](http://www.HavenSLO.com)

441 Marsh Street  
San Luis Obispo, CA 93401

An Independently Owned and Operated Franchise. LIC 01227626



**Growing Grounds**  
DOWNTOWN

**Plants & Gifts for a Cause**

956 Chorro St.  
San Luis Obispo, CA 93401  
Phone: 805-544-4967  
Email: [ggdstore@t-mha.org](mailto:ggdstore@t-mha.org)

*Inspiring hope, growth, recovery and  
wellness in our communities.*  
[www.t-mha.org](http://www.t-mha.org)

## CCCSS BOARD OF DIRECTORS & OFFICERS

President	Harry Harlow
Vice President	Bill Findley
Secretary	Mary Harlow
Treasurer	Kathy Goss
Publicity	Open - anyone interested??
Hospitality	Pat Gilson
Membership	Laura Oliver
Past President	Loring Manley
CSSA Affiliate	Rob Skillin
Member-at-large 1	Natasha Erikson
Member-at-large 2	Karen Kolba
Member-at-large 3	Mary Peracca
Newsletter Editor	Carol Mortensen

**General Club Email Address:**  
[info@centralcoastcactus.org](mailto:info@centralcoastcactus.org)