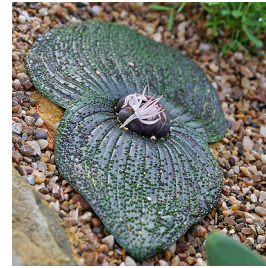
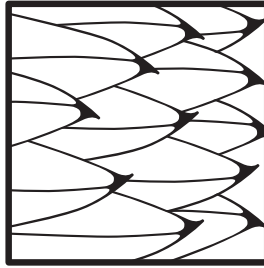


On the Dry Side

www.CentralCoastCactus.org

OCTOBER 2009



Central Coast Cactus
& Succulent Society
C/O Nick Wilkinson
1719 14th Street
Los Osos, CA 93402

EVENTS

OCTOBER MEETING

Sunday, Oct. 18th, 2pm
(3rd Sunday for Oct. Only)

NOVEMBER MEETING

Sunday, Nov. 8th, 2pm
(2nd Sunday)

LOTUS LAND

Saturday, Nov. 14th
Depart SLO at 7am
(Madonna Plaza Shopping
Center at Big Five)
\$25 for Members
\$60 for Non-Members

DECEMBER MEETING

Holiday PotLuck
Sunday, Dec. 13th, 2pm
(2nd Sunday)

SEPTEMBER RECAP

The September meeting kicked off to a good start with President Mary Peraca welcoming 9 guests. They each received a free plant for attending.

Terry Skillin talked about our **upcoming field trip to Lotus Land in Santa Barbara**. Terry has done a lot of work preparing for this **November 14th** trip, leaving SLO at 7:00am for a 10:00 tour. It's a great deal for CCCSS members, only \$25.00, not to mention this is an incredible place that any plant enthusiast will enjoy. Contact her ASAP as the bus is filling up, her phone is 473-0788.

Our member Gene Schroeder talked about plant of the month Parodia. This is an easy plant to grow, takes light frost and comes from South America. Notocactus, which some of us may be more familiar with has now been changed to the genus Parodia. Gene did a great job sharing his vast knowledge with us. Thanks Gene!

The Raffle plants this month was some of the best I've seen! Not only were there many of them, there were some very nice caudiciform specimens, along with some great "color" boxed cacti. This is always a fun part of the meeting, especially if you're one of the lucky ones to win

Our guest speaker this month was Joe Wujcik from Fallbrook, CA. He has been a judge in many C&S shows and a potter for some 38 years. He talked about different techniques for staging your show plants. He recommends leaving at least a finger space between the pot and plant for growth room as judges like to see that. He suggests using different types of rocks to break up the plant surface to create a scene of how the plant may look like in the wild. He also talked about choosing pots to match the color of your plant, and be creative! Another note was how a blue pot will always make your plant look greener. His also suggested that matte, unglazed pots accommodate woody, caudiciform and heavy spine cactus better. He felt glazed would be better suited for succulents and plants showing a lot of body.

In conclusion, remember the plant is what should be emphasized on staging your plant, keep it simple and have fun with it! Thanks, Joe for sharing your ideas with us, we'll be ready for the next show. ~ Jan Moon

SOUTH AFRICAN BULBS

South African Bulbs – Boy, here's a genera that is a wide open field.

Albuca, Babiana, Boophane, Haemanthus, Litanthus, Massonia, Ornithogalum, Oxalis... Where to start!

CULTIVATION

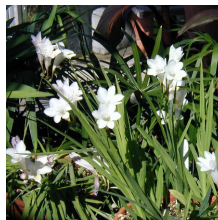
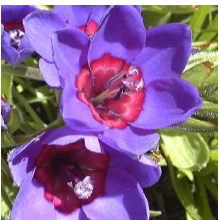
OK, Let's start with cultivation. The nice thing about these plants is that they generally do well grown in a typical succulent mix and cultural regime. Free draining is the way to go, with watering during the Winter growing season and a light feeding now and then. As with most other South African plants they do there growing during the cooler Winter months. Unlike the succulent plants that we are used to growing, in there natural habitat these bulbs loose their above ground vegetation completely as they go dormant during the Summer. They have a somewhat easier time in cultivation and some will carry exposed greenery year 'round (at least for those of us that cannot help but provide a little water every now and then during the Summer). Most like full sun and some, like Albuca, require full exposure to really look good.

SOME GENERA

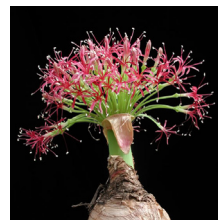


Albuca & Ornithogalum – The flowers are usually white and yellow, with three open petals around the outside and three closed around the center and are unscented. Most of the species are rather uninteresting looking and some are very common in cultivation like *Ornithogalum caudatum* (Pregnant Onion) that many of use grew as kids. *Albuca namaquensis*

and *spiralis*, on the other hand, can be very interesting with tightly spiraled linear shaped leaves when grown in full sun. These particular plants were hard to find for purchase but are becoming somewhat common and shows and sales. Reproduction is typically from seed as some offset but most don't.



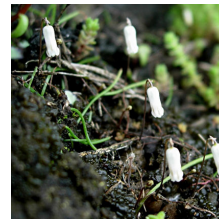
Babiana – The flowers are extremely variable in color with whites, yellows, reds and purples. These bulbs are mostly grown for their flowers and can tolerate some Summer watering. They are propagated both by seeds or offsets and are typically used as landscape plants.



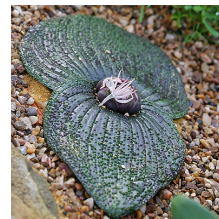
Boophane – A small genera of three slow growing species. Some sources say that these bulbs can come from either Summer only or Winter only growing regions so watch your plants, they'll tell you which. The bulb can grow quite large over many years and create an interesting display when raised above ground while re-potting. The greyish undulate leaves are the most interesting part, though, and the showy purplish flowers form on a large umbel.



Haemanthus – Summer or Winter growing bulbs possessing two, sometimes pubescent, seasonal leaves. These plants, at least amongst succulent growers, are grown mostly for the single pair of dark green leaves that, on mature bulbs, can reach strikingly over the side of the pot. The flowers are a nice bonus (and can look somewhat like *Boophane* flowers).



Litanthus – A miniature Winter grower. A fully matures bulbs will send linear shaped leaves one to two inches above ground starting in the Fall with bell shaped flowers following in late Spring once the leaves have died back. Growing this bulb is a labor of love and purely for up-close observation.



Massonia – Another pretty incredible two leaved plant. The leaves appear out of nowhere at the start of Winter and hug the ground extending only a small fraction of an inch above the soil. The relatively large white or purple flowers form in late Winter.



Oxalis – A weed.

OCTOBER'S PROGRAM

This month's program on South African bulbs is brought to us by Tom Glavich of the San Gabriel Valley C&SS.